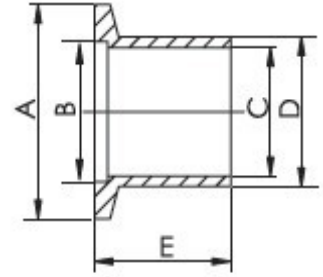


KF 焊接法兰

KF Weld Stub Flanges



※Material: SUS304 or SUS316L

※Remark: "-CX" 表示承插焊法兰

KF Weld Stub Flanges,Short

Unit:mm

Parts No.	A	B	C	D	E
CFP-10S	30.00	12.20	10.60	13.80	20.00
CFP-16S	30.00	17.20	16.00	20.00	20.00
CFP-25S	40.00	26.20	24.00	27.20	20.00
CFP-40S	55.00	41.20	39.00	42.70	20.00
CFP-50S	75.00	52.20	55.00	60.50	20.00
CFP-63S	87.00	70.00	70.20	76.30	20.00
CFP-80S-CX	114.00	83.00	89.70	98.00	25.00
CFP-100S-CX	134.00	102.00	114.90	118.00	25.00
CFP-160S-CX	190.00	153.00	166.30	174.00	20.00

KF Weld Stub Flanges,Half

Unit:mm

Parts No.	A	B	C	D	E
CFP-10H	30.00	12.20	10.60	13.80	20.00
CFP-16H	30.00	17.20	16.00	20.00	20.00
CFP-25H	40.00	26.20	24.00	27.20	20.00
CFP-40H-CX	55.00	41.20	45.30	48.60	20.00
CFP-50H	75.00	52.20	55.00	60.50	20.00
CFP-80H	114.00	83.00	89.70	89.10	25.00
CFP-100H	134.00	102.00	110.10	114.30	25.00
CFP-160H-CX	190.00	153.00	159.60	165.20	20.00

KF Weld Stub Flanges,Long

Unit:mm

Parts No.	A	B	C	D	E
CFP-10L	30.00	12.20	10.60	13.80	50.00
CFP-16L	30.00	17.20	16.00	20.00	50.00
CFP-25L	40.00	26.20	24.00	27.20	50.00
CFP-40L	55.00	41.20	39.00	42.70	50.00
CFP-50L	75.00	52.20	55.00	60.50	50.00
CFP-63L	87.00	70.00	72.20	76.30	50.00
CFP-80L	114.00	83.00	84.90	89.10	50.00
CFP-100L	134.00	102.00	110.10	114.30	50.00